

POULTRY MEAT

February 2026

Slaughter (thous heads)

56.236 117.198 ▼ -7,1 %
 Feb 2026 Jan-Feb 2026 Var. interanual
 Jan-Feb 2026 vs 2025

Production (thous tn)

171 356 ▲ -8,9%
 Feb 2026 Jan-Feb 2026 Var. interanual
 Jan-Feb 2026 vs 2025

Per Cápita Consumption– Moving average (kg/cap/year)

47,0 ▲ 1,9 %
 Feb 2026 Var. interanual
 Feb 2026 vs 2025

Exports (thous tn)

9,33 23,88 ▼ -16,0 %
 Feb 2026 Jan-Feb 2026 Var. interanual
 Jan-Feb 2026 vs 2025

Exports (thous U\$ FOB)

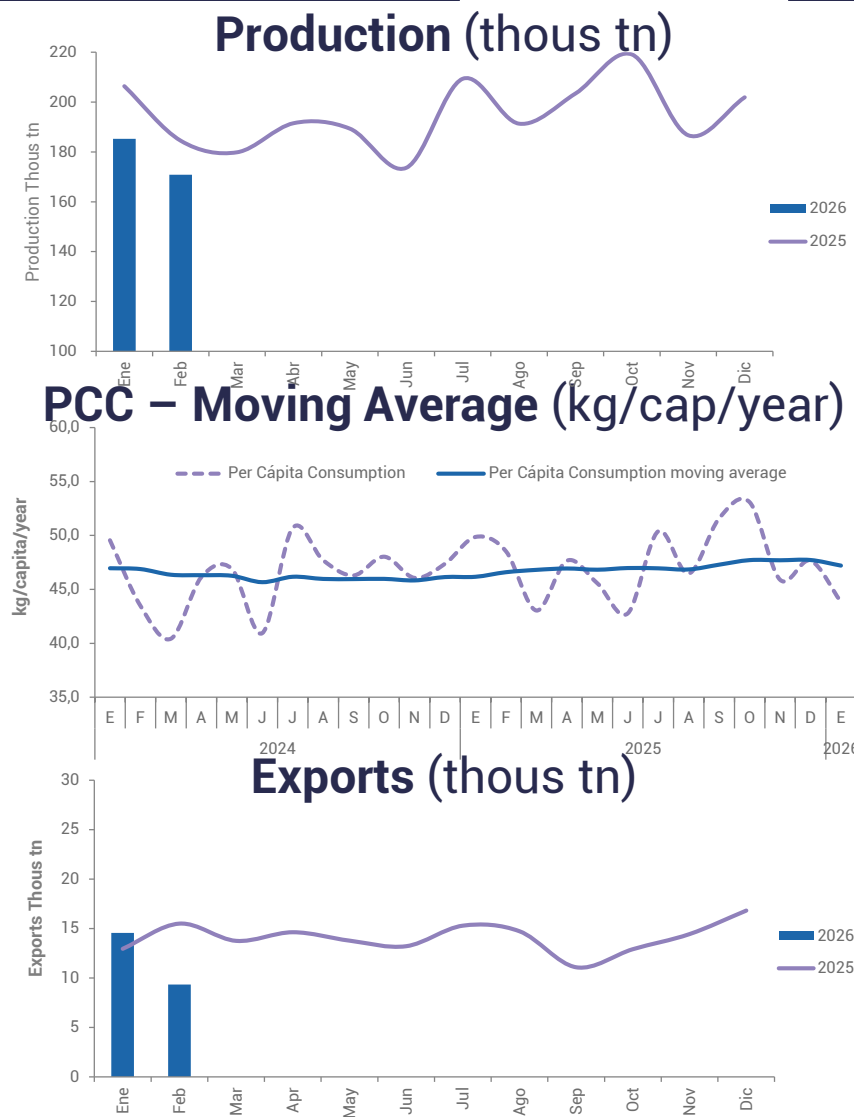
11.192 28.203 ▼ -14,7 %
 Feb 2026 Jan-Feb 2026 Var. interanual
 Jan-Feb 2026 vs 2025

Imports (thous tn)

2,02 3,13 ▼ -4,8 %
 Feb 2026 Jan-Feb 2026 Var. interanual
 Jan-Feb 2026 vs 2025

Imports (thous U\$ CIF)

4.306 6.883 ▼ -10,3 %
 Feb 2026 Jan-Feb 2026 Var. interanual
 Jan-Feb 2026 vs 2025



Source: prepared based on data from SENASA, INDEC, COMEX y SSPAyF
 Preliminary data

